

Childhood Obesity in Hartford

Lee M. Pachter, DO
Connecticut Children's Medical Center
Children's Center for Community Research
Lpachter@ccmckids.org

Consequences of Childhood Obesity

- Medical Concerns in Childhood
 - Hypertension
 - Type II Diabetes
 - Orthopedic problems
 - Altered immune function
 - Skin disorders
 - Sleep disorders
 - Behavioral issues (self esteem, social alienation, depression, bullying...)

Consequences of Childhood Obesity: obese children tend to become obese adults

- Hypertension
- Cardiovascular disease
- Hyperlipidemia (now being seen in children)
- CVD/stroke
- Insulin resistance, metabolic syndrome
- Gall bladder disease
- Arthritis, orthopedic issues

Childhood Obesity: Medical Care and Costs

- Obese children have double the number of physician visits per year, compared to non-obese children.
- Children dx'd with obesity are 2-3 times more likely to be hospitalized
- Annual healthcare costs for a child treated for obesity: \$3700-\$6700
- National healthcare cost: \$15 billion

Obesity Rates

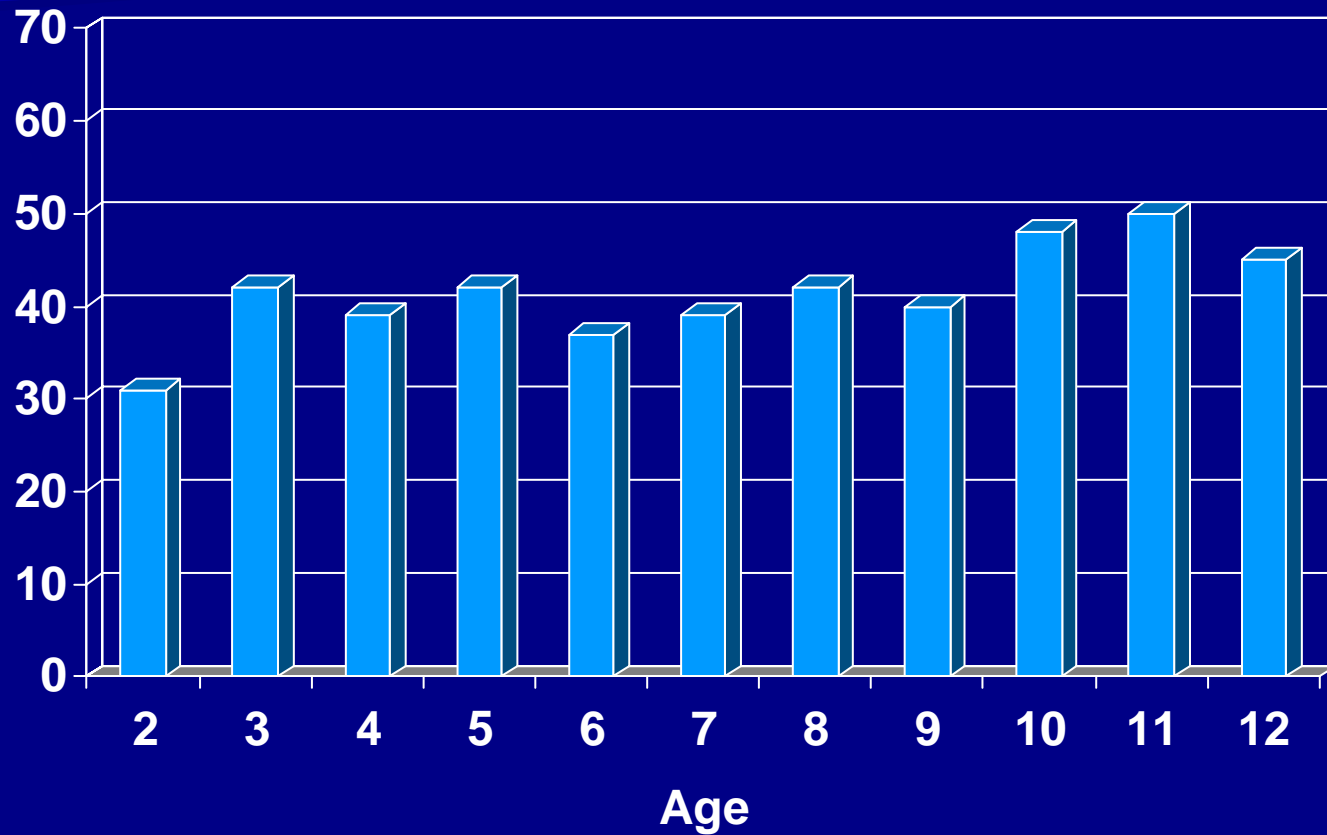
	U.S. (2003-2006)	Hartford* (1999-2008)
2-5 years	12.4%	23%
6-11 years	17%	24%

*: Analysis of 8300 measurements in 3000 schoolchildren

"At Risk" + Obese

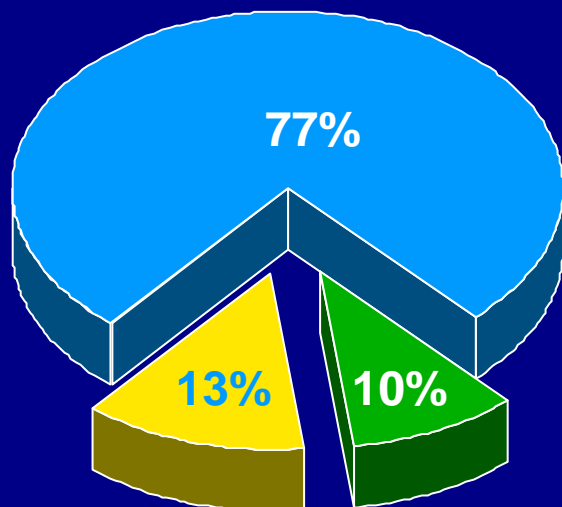
	U.S. (2003-2006)	Hartford (1999-2008)
2-5 years	24.4%	40%
6-11 years	33.3%	41%

At Risk + Obese



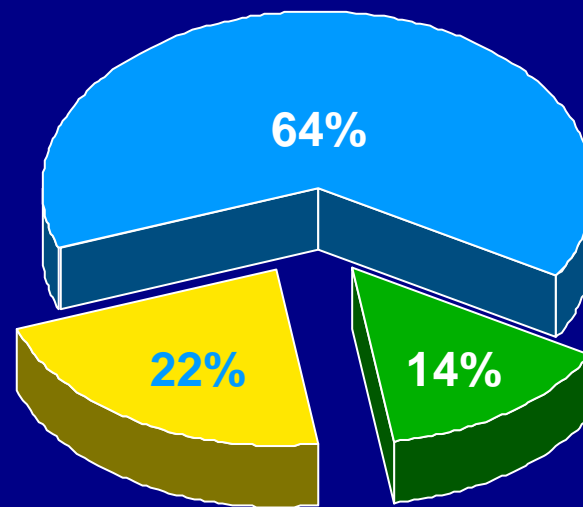
Hartford School Children, Kindergarten

Late 1990's



■ Normal ■ At Risk ■ Obese

2007



■ Normal ■ At Risk ■ Obese

"At Risk" For Obesity: Hartford Public Schools

